

Quick Start Guide

SL-RMU

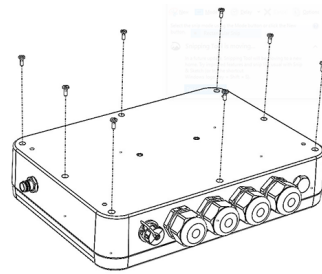
Thank you for purchasing this product. This guide will provide you with a brief summary of the steps involved in successfully installing the Remote Monitoring Unit (RMU).

Your system will consist of: 1 x SL-RMU remote monitoring unit.
To successfully set up this product, you require:

- Star2M® portal access
- Internet connection

Introduction

The purpose of this quick start guide is to present a brief summary of the steps involved in the installation of the Remote Monitoring Unit (RMU), from the physical installation of the enclosure itself to configuration in Star2M.



Step 1: Installing the RMU

Remove the SL-RMU remote monitoring unit from the packaging and carefully place on a solid work surface.

Step 2: Open the RMU enclosure

Loosen and remove the 8 X M3 screws at the back of the enclosure and remove the top cover.

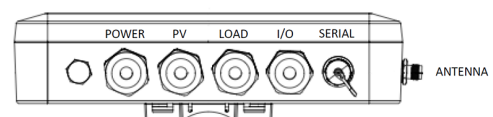
Step 3: Complete wiring for applicable external connection interfaces

Connect cables through the applicable cable glands in the RMU enclosure.

Note: Ensure that the unused cable glands are sealed using the provided bungs.

Note: Connection for serial comms monitoring can be done either via Serial Cable (standard installation) or via direct wiring (SL-PEL installations only).

Please see installation manual for further details.



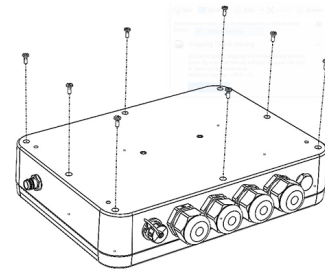
For the full manual, visit the link below:
sealite.com/remote-monitoring-unit-sl-rmu



Step 4: Close the RMU enclosure

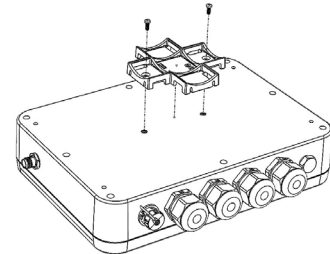
Replace the 8 x M3 screws from the back of the enclosure, replace the lid and tighten the screws.

Note: Ensure that the rubber gasket is placed properly in the bottom base to ensure a watertight seal when the RMU is closed (see image in step 5b).



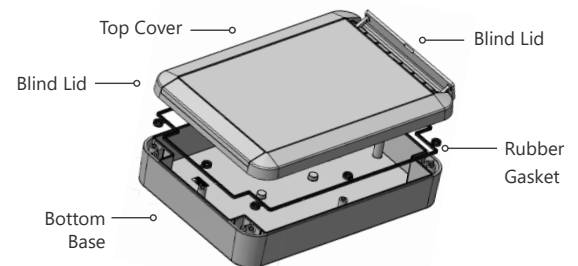
Step 5a: Pole mounting the RMU enclosure

The RMU enclosure can be pole or wall mounted. For pole mounting, attach the mounting bracket (supplied) to the back of the enclosure. This assembly can then be mounted to the pole using steel cable ties (not supplied).



Step 5b: Wall mounting the RMU enclosure

For wall mounting, the enclosure can be attached to the wall through the holes under the blind lids in the top cover. Bolts or U-clamps may be used (not supplied).

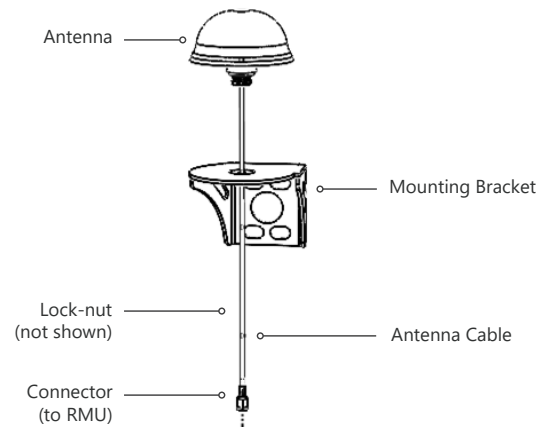


Step 6: Mount the external antenna

The antenna should be installed such that it has clear line of site to the sky. Mount the provided antenna mounting bracket to the pole or wall, then thread the antenna cable through the top of the bracket before fastening the lock-nut to the antenna from underneath the bracket. Lastly, plug the antenna cable into the antenna connector in the side of the RMU enclosure.

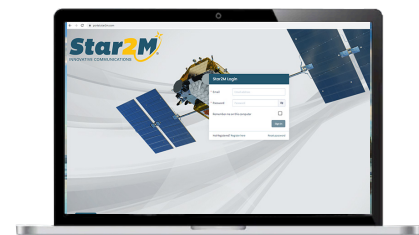
Note: The antenna cable is 500mm long and hence the mounting bracket should not exceed this distance from the RMU when installed.

Note: The antenna cable path should allow for relaxed bend radius and should not be tightly coiled, folded or stretched.



Step 7: Configure the RMU in Star2M

Navigate to www.portal.star2m.com. Consult the [Star2M manual](#) to create an account, register the RMU as a satellite enabled asset, create an alarm configuration (if alarming is required) and configure alerting and reporting profiles.



Head Office
+61 (0)3 5977 6128

Sealite USA
+1 (603) 737 1311

Sealite UK
+44 (0)1502 588026

Sealite Asia
+65 9119 8770

